

Relative Positioning for Collision Avoidance Systems

REPOSIT

IEEE WiVec- Baltimore 29th 2007

www.ist-reposit.org



© GMV, 2007 Property of GMV
All rights reserved

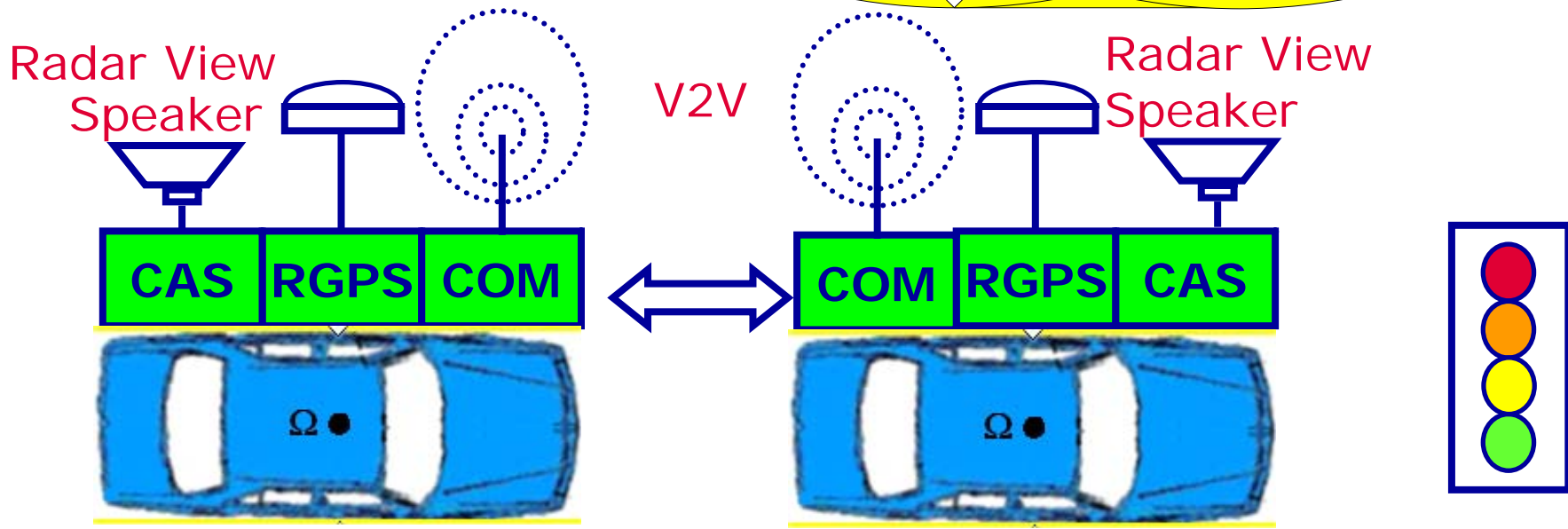
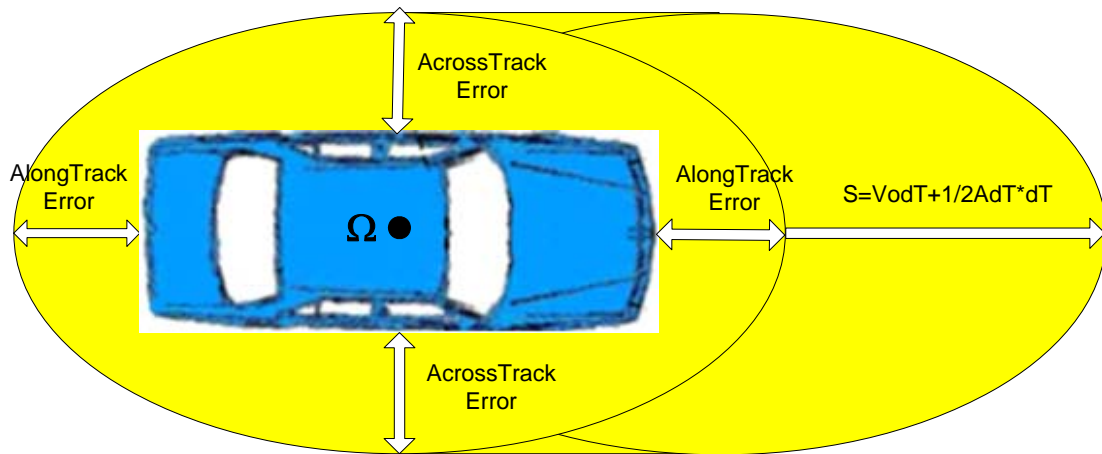


REPOSIT SIMULATOR

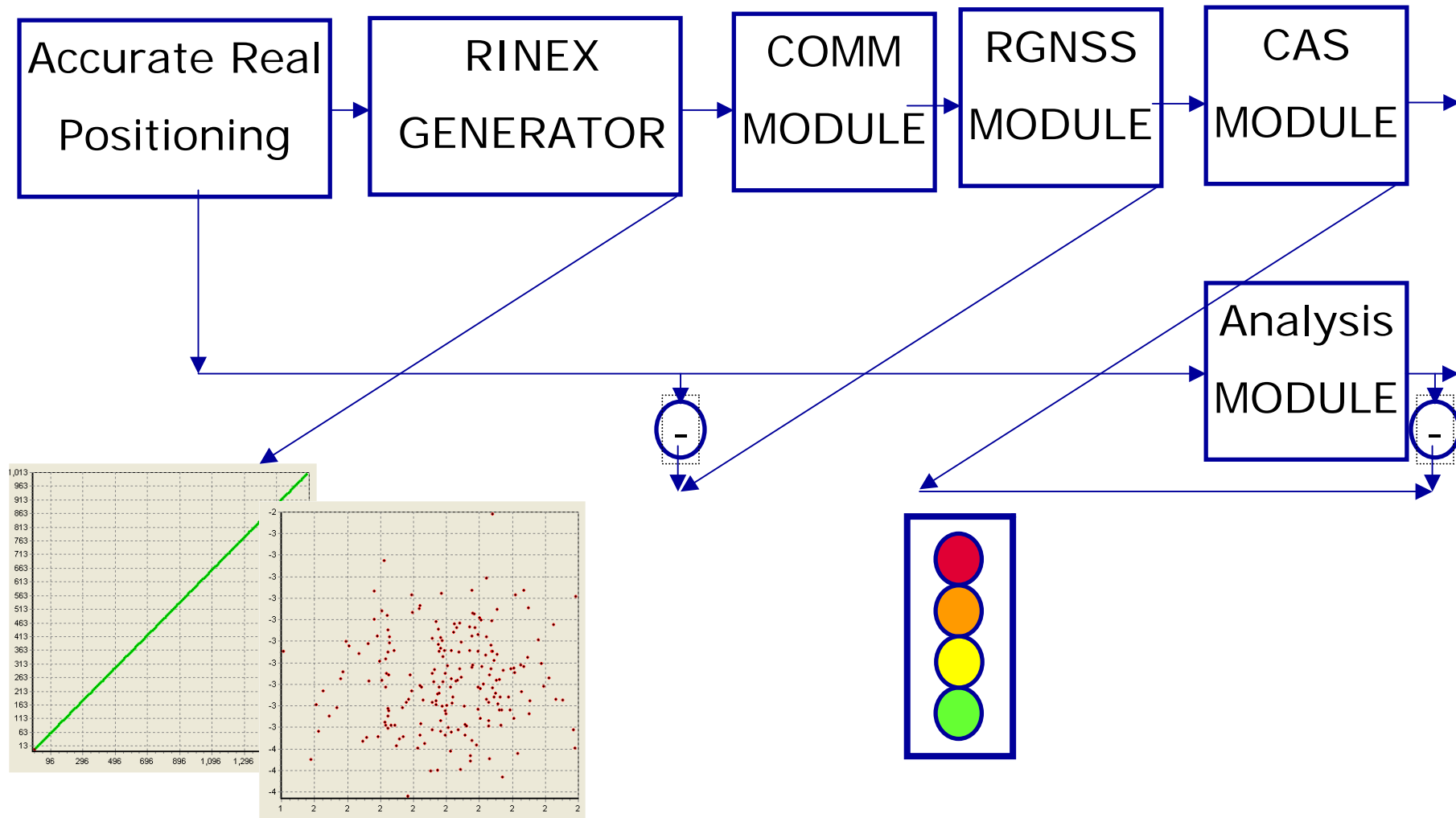


V2V IS REPOSIT ENABLER

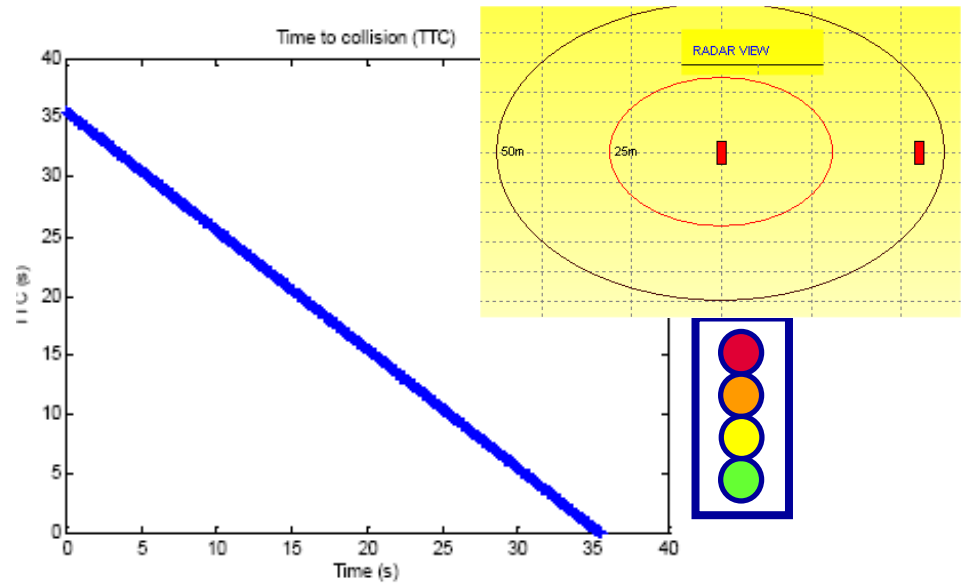
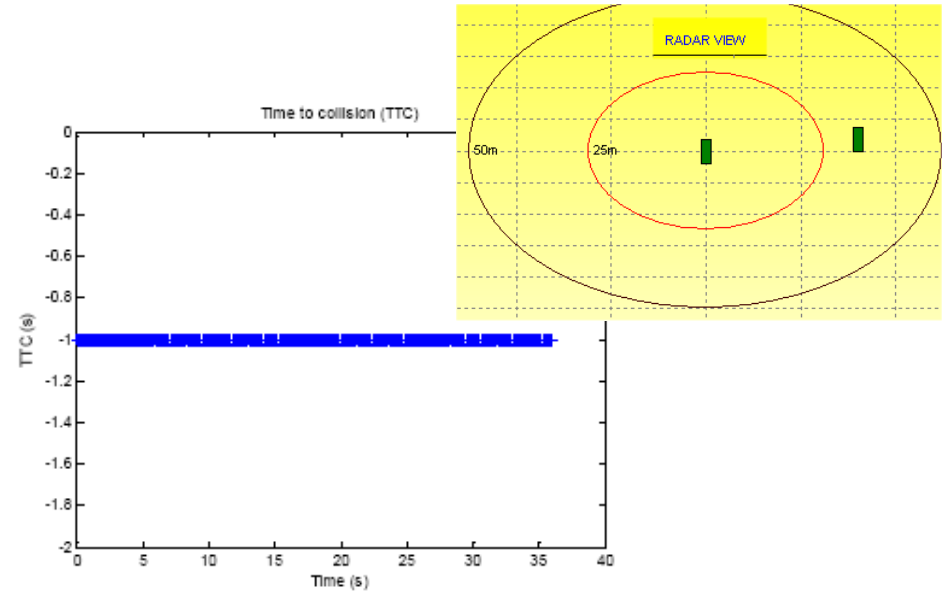
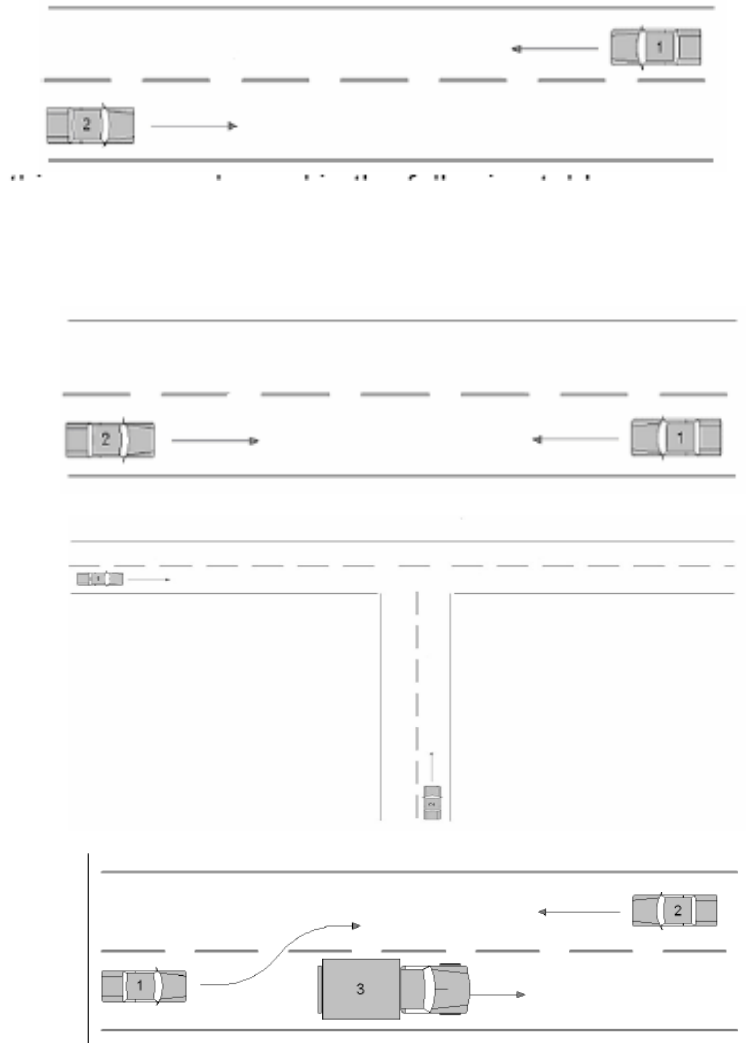
Security Domain
& Collision Alarm Levels



SIMULATOR MODULES



SAMPLE TRIALS





Thank you

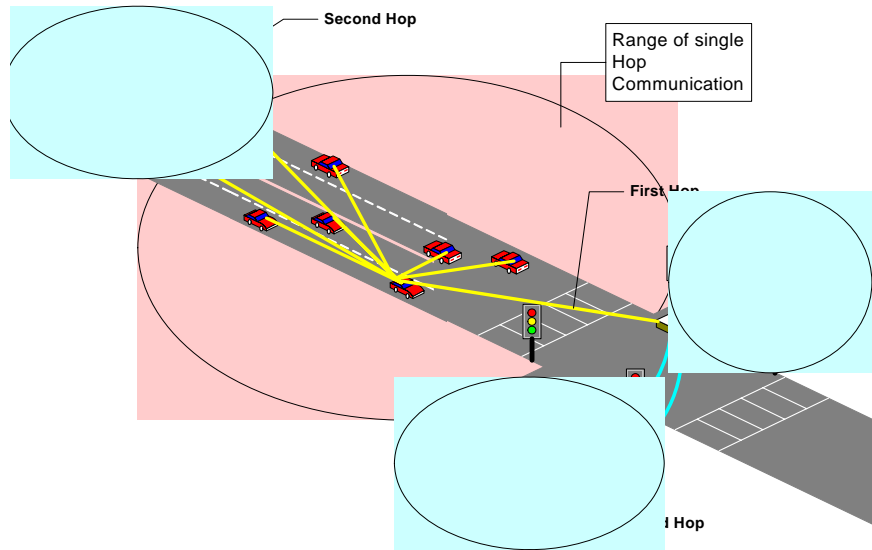
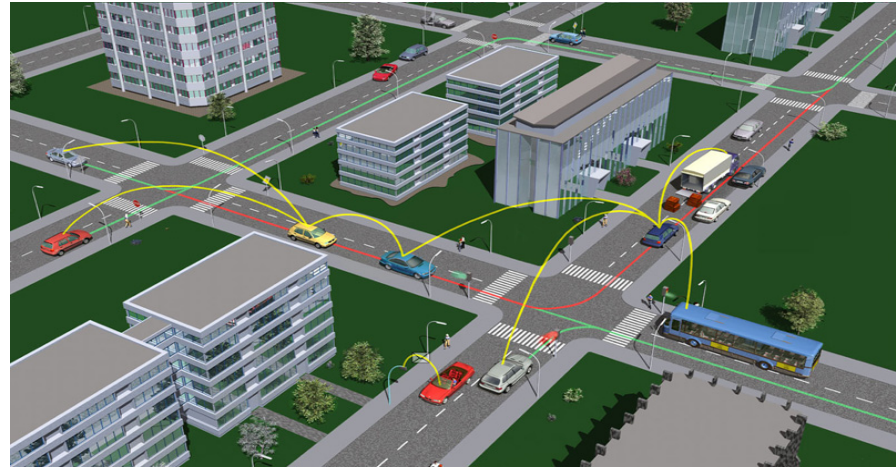
José I. Herrero Zarzosa (jherrero@gmv.com)
Miguel Eduardo Gil Biraud (megb@gmv.com)
www.gmv.com



REPOSIT Simulator (I): V2V module

Establishment of V2V wireless communications to send REPOSIT information to the nearby vehicles.

Communication scheme is a simple-hop, broadcasting TDMA/CSMA scheme.



REPOSIT Simulator (II): V2V module

- Delays: TTAuthentication, Tlatency
 - Collision probability. Statistics.
 - Data degradation. Function of Distance, size, statistics, environment.
 - Slot assignment logic.

